



# Ridge Creek Fire



Idaho Panhandle National Forests, Coeur d'Alene River  
Ranger District  
Fire Information 208-953-7022  
Media Information 989-292-9373  
[2023.ridgecreek@firenet.gov](mailto:2023.ridgecreek@firenet.gov)  
<https://inciweb.nwcg.gov/incident-information/idipf-ridge-creek>

**August 13, 2023**

---

**Location:** Approximately 3.5 miles east of the north tip of Hayden Lake, along the Hayden Creek Road (FSR 437) in the Ridge Creek drainage.

**Start Date:** 8/3/2023    **Cause:** Human/Under Investigation    **Size:** 2,448 acres    **Containment:** 15%  
**Total Personnel:** 350    **Engines:** 14    **Heavy Equipment:** 4    **Crews:** 8

**A community meeting is scheduled for today (Sunday), August 13, at 3:30 PM at the Athol Community Center located at 30355 3rd St, Athol, ID 83801. This will be live-streamed on the Idaho Panhandle National Forests Facebook page ([www.facebook.com/USFSIPNF/](https://www.facebook.com/USFSIPNF/)).**

**Acreage and containment estimates were revised this morning to reflect analysis of data gathered from the infrared flight that occurred last night.**

## **FIRE STATUS**

The Ridge Creek Fire is now estimated at 2,448 acres with 15% containment. Fire crews and heavy equipment operators continue to make progress in reinforcing and connecting containment lines. Containment reflects how much of the fire's perimeter has reached the fireline and is reasonably expected to hold there. Winds today are predicted to be light, but directionally flow out of the northeast. This easterly flow over the fire will increase smoke impacts downwind to the west and south, but is not anticipated to have a substantial effect on fire behavior. Out of an abundance of caution, a night shift of engines will monitor fire behavior again tonight due to the northeasterly flows expected again tonight. Weather will continue to trend hotter and drier in the coming week which should be anticipated to increase fire behavior and with it the visibility of smoke in the area.

Hand crews and dozers will continue to work on the south end of the fire along Forest Service Rd 437 (Hayden Creek Rd), east through Hells Canyon to FSR 406 and up to Hudlow Saddle. On the fire's northeast side, crews continue to improve fireline through Sage Creek Saddle using FSR 406. Operational staff are scouting the forested area between FSR 406 and South Chilco Mountain for places to extend the fire line eastward. On the fire's west flank, crews are reinforcing FSR 625. From the intersection of FSR 625 and FSR 1526, crews are constructing fireline along a forested ridge to FSR 406 near Cedar Saddle. Additional containment line is also being constructed using FSR 2302 (Buckles Mountain Rd) and along Ridge Creek to FSR 437 (Hayden Creek Rd).

## WEATHER AND FIRE BEHAVIOR

This week's weather is trending warmer and drier, which will cause fire behavior to increase. Temperatures today will range from the high 80s at lower elevations to the low 80s at higher elevations. Winds are predicted to be light, but will flow from the northeast with some variability. Relative humidity will approach 25% during the day, with overnight recovery to 45%. Fire activity is anticipated to increase, particularly on south-facing slopes, as temperatures increase throughout the week. The visibility of smoke will increase with the trend to higher temperatures and increased fire behavior.

## EVACUATION STATUS

The Kootenai County Office of Emergency Management has issued an alert to inform residents of the identification of **READY, SET, GO** areas in the vicinity of the Bunco Road and Hayden Lake. In this status, residents are cautioned to heighten their awareness of fire information, be familiar with evacuation procedures should it become necessary, and consistently adhere to good fire prevention measures.

The Kootenai Office of Emergency Management provides the following direction for residents in these areas designated with a **GET READY** status: "Please continue to monitor official sources and call 208-446-2292 for any questions regarding evacuations. Follow Kootenai County Emergency Management Facebook Page for updates and sign up for automated Kootenai Alert for emergency alerts.

<https://www.kcsheriff.com/186/Emergency-Management>."

A map of the revised **GET READY** areas is included with this update below.

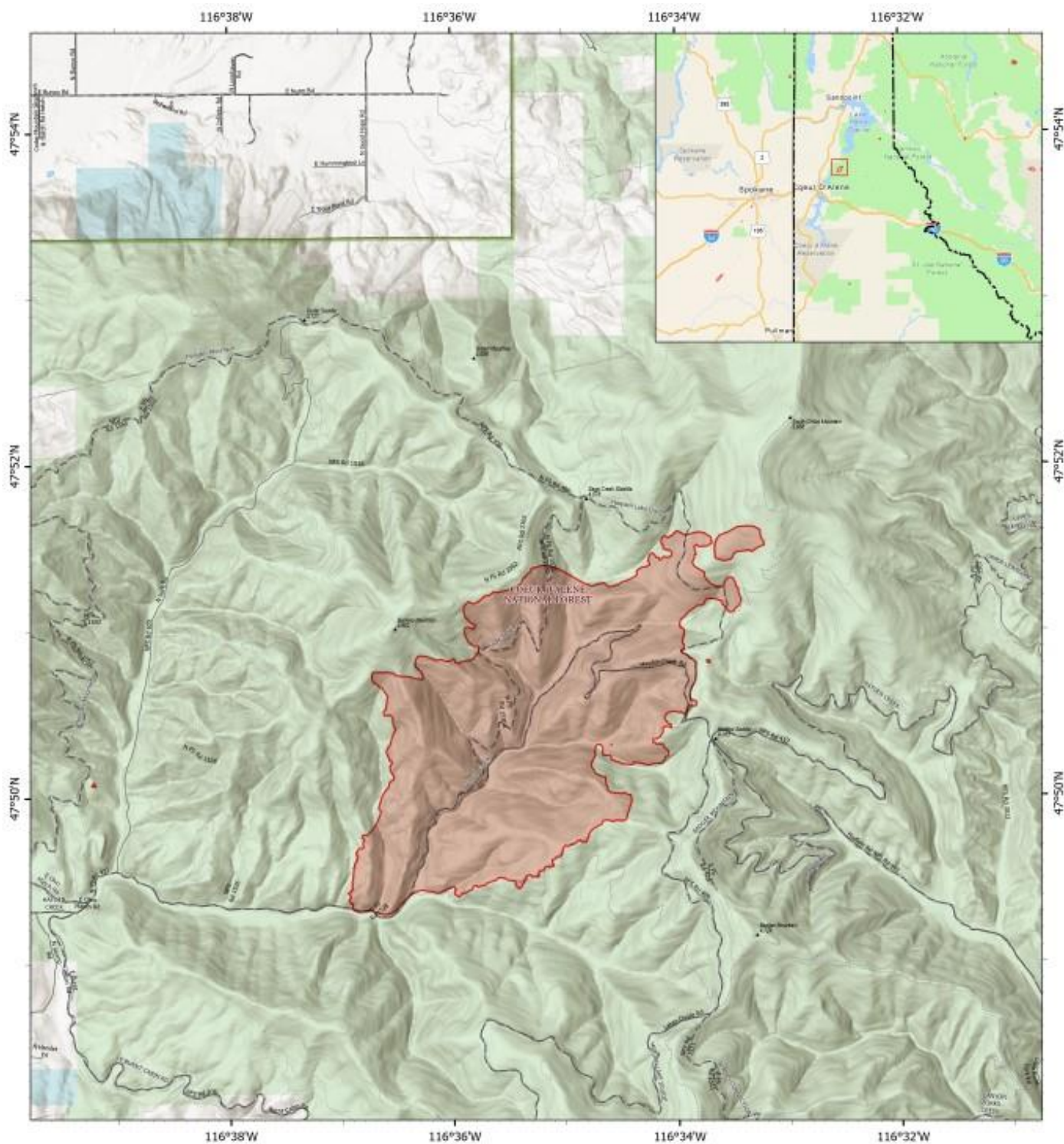
## CLOSURES AND SPECIAL MESSAGES

There is a Temporary Flight Restriction (TFR) in place for the Ridge Creek Fire to prevent incursion of civilian aircraft into the area used by fire fighting aircraft. This restriction also applies to the use of drones in the TFR area.

Firefighting aircraft are shared resources among numerous fires within the region, including the Ridge Creek Fire. These aircraft will continue to use area waterways, including Hayden Lake, for fire suppression efforts. This means that residents and recreational boaters are likely to see either helicopters or fixed-wing aircraft using the lake. For planes in particular, this requires a long, linear approach and exit from the lake. This restricts their ability to maneuver abruptly should watercraft be within their flight path, creating a serious safety hazard for both boaters and pilots. Pilots that have to deviate to avoid watercraft will also be delayed in acquiring water, inhibiting their fire suppression efforts. **All lake users should be on the lookout for approaching aircraft.** If firefighting aircraft are in the area, boaters should clear the center of the lake and move toward the shoreline.

The Coeur d'Alene Dispatch Zone has issued Stage II Fire Restrictions across the Idaho panhandle. The entirety of Kootenai County is within the Stage II Fire Restrictions area. An infographic is included with this update that details the activities that are prohibited under the restriction.

The Idaho Panhandle National Forests issued an emergency closure (Closure Order #01-04-03-23-002) effective August 4, 2023. This Order is for public and firefighter safety due to heavy fire traffic on the area impacted on the Coeur d'Alene River Ranger District, and prohibits all methods of travel (foot, mechanized, motorized and stock) on Forest Service Roads 392, 428A, 437, 1511, 1530, 1552, 1587 and Forest Service Roads 206 and 406 north of their junction, Forest Service Trails 69, 78, 234, and 802 as well as within the described area.



**PIO**  
**RIDGE CREEK**  
**IDIPF000447**  
 08/13/2023 Day

2417 acres at 8/11/2023 @ 2251 hrs  
 Acres from IR

North American 1983 Datum  
 Lambert Conformal

0 0.5 1  
 Miles



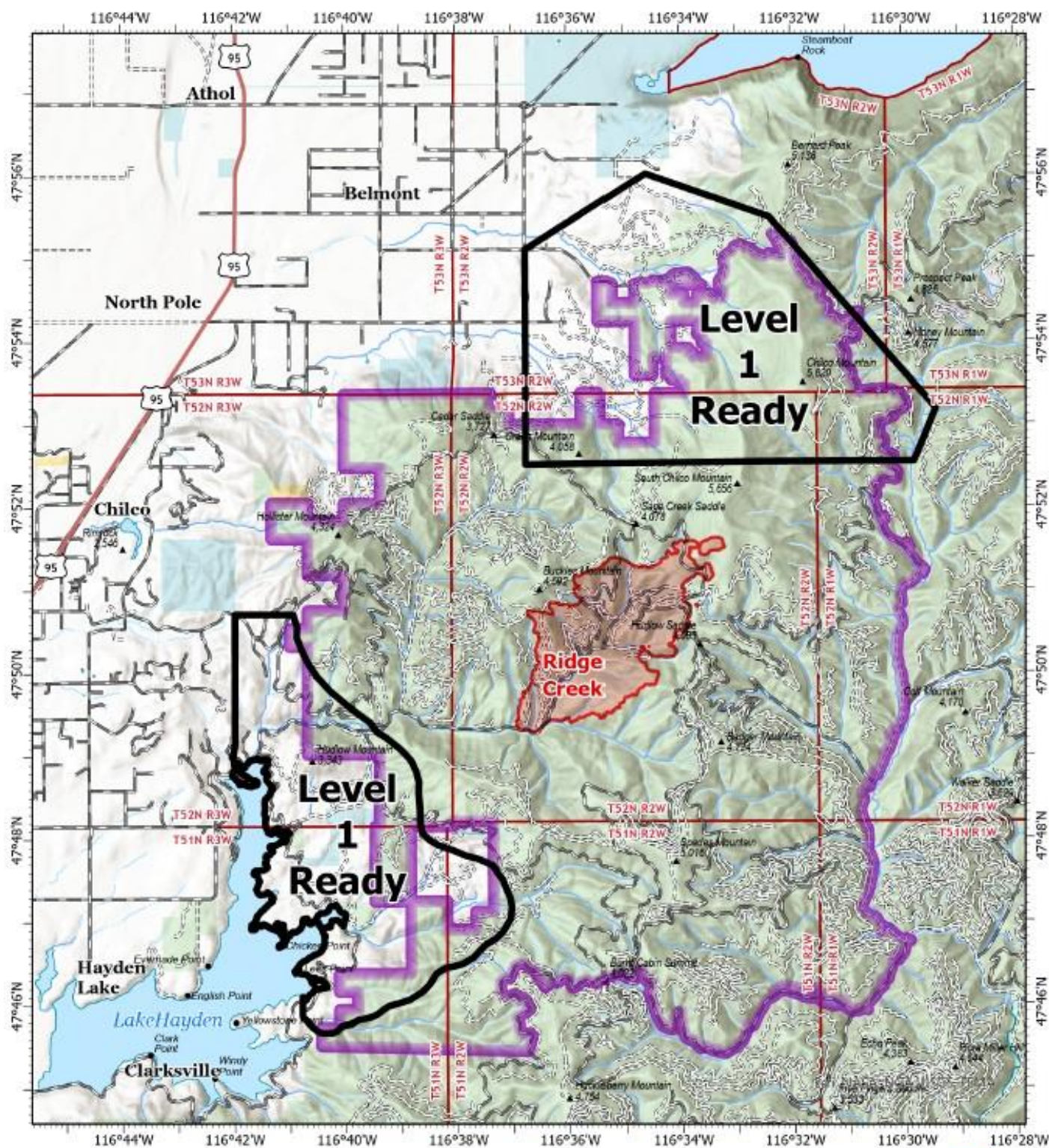
- US State Boundaries
- National Forest
- Wildfire Daily Fire Perimeter

**Land Management**

- State
- US Forest Service (USFS)







**PIO**  
**Ready, Set, Go and Closures**

**RIDGE CREEK**  
**IDIPF000447**  
**08/13/2023 Day**

2417 acres at 8/11/2023 @ 2251 hrs  
 Acres from IR

North American 1983 Datum, LatLong Gnd



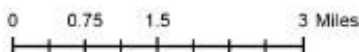
- Wildfire Daily Fire Perimeter
- Closure Areas

**Land Management**

- BLM
- State
- USFS

**Evacuation Level**

- Level 1



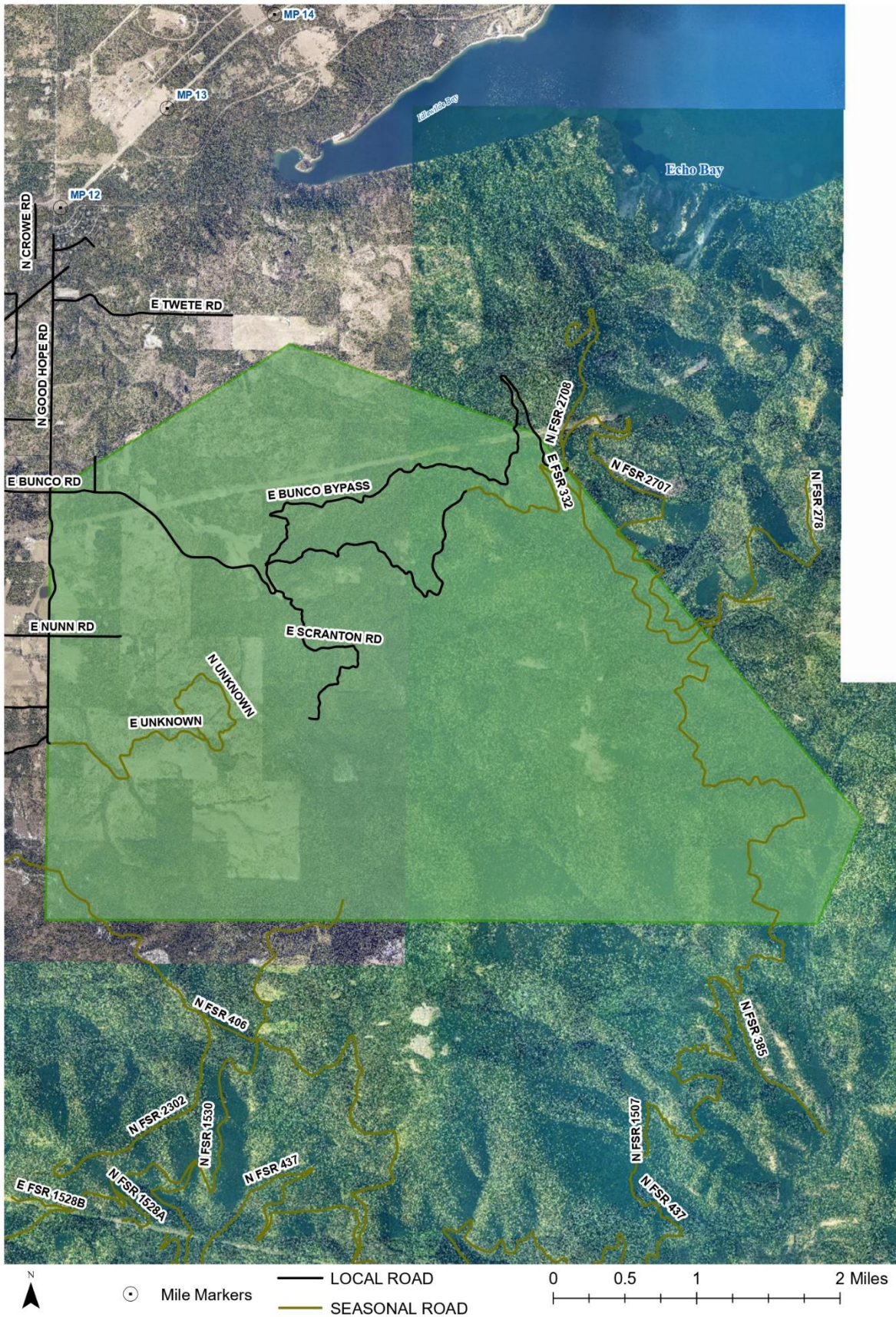




# Ridge Creek Fire - Bunco

Kootenai County  
August 8th, 2023

Level 1: Get Ready



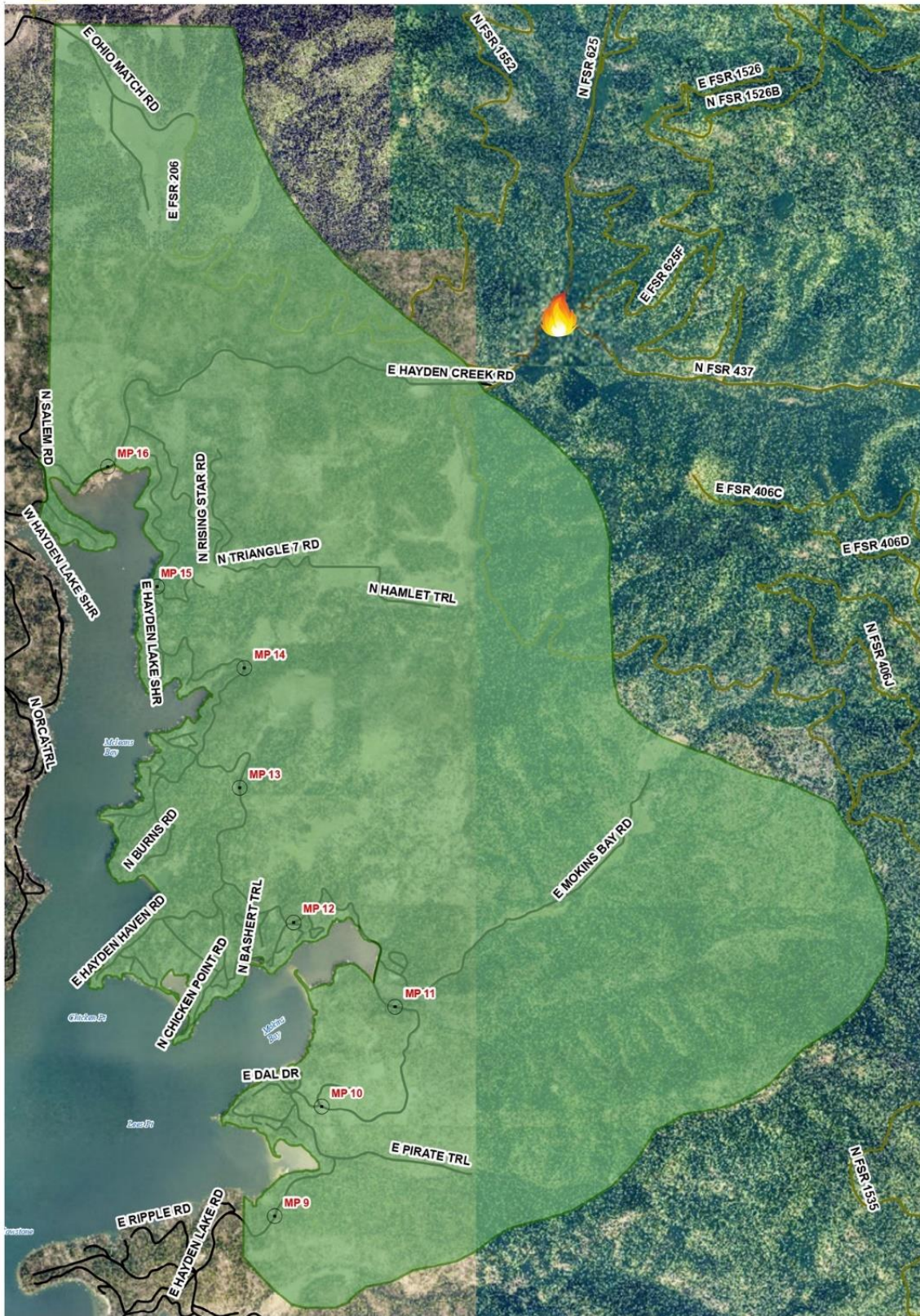




# Ridge Creek Fire

Level 1: Get Ready

Kootenai County  
August 4th, 2023



○ Mile Markers  
— LOCAL ROAD  
— SEASONAL ROAD

0 0.25 0.5 1 Miles





## Idaho Panhandle National Forests



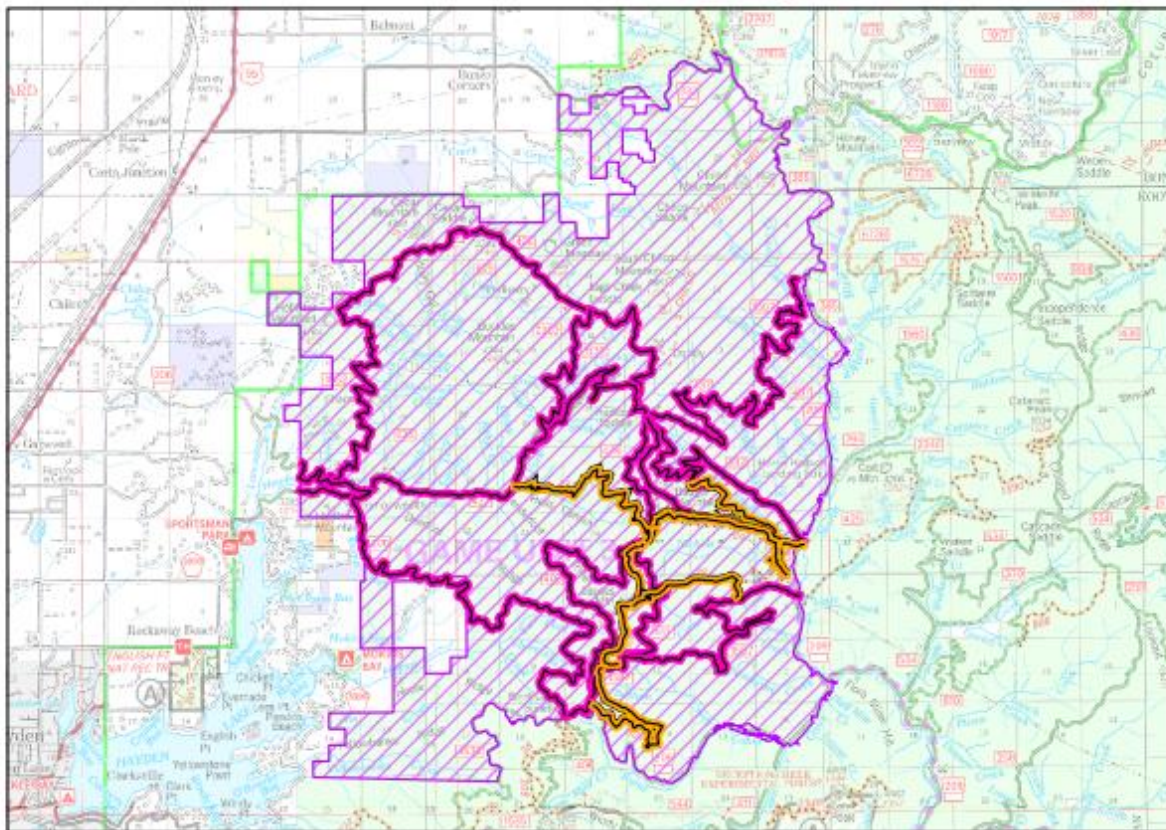
**Forest Closure: Ridge Creek Fire Closure**

**Order Number: 01-04-03-23-002**

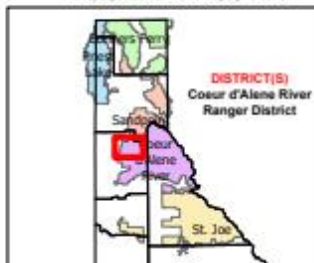
**Effective Date : AUGUST 4th, 2023**

**Rescind Date : SEPTEMBER 30th, 2023**

### Exhibit A



#### IDAHO KOOTENAI COUNTY



#### Closed Road Numbers:

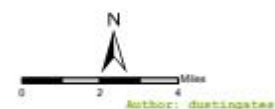
-206  
-392  
-406  
-428A  
-437  
-1511  
-1530  
-1552  
-1587

#### Closed Trail Numbers:

-69  
-78  
-234  
-802

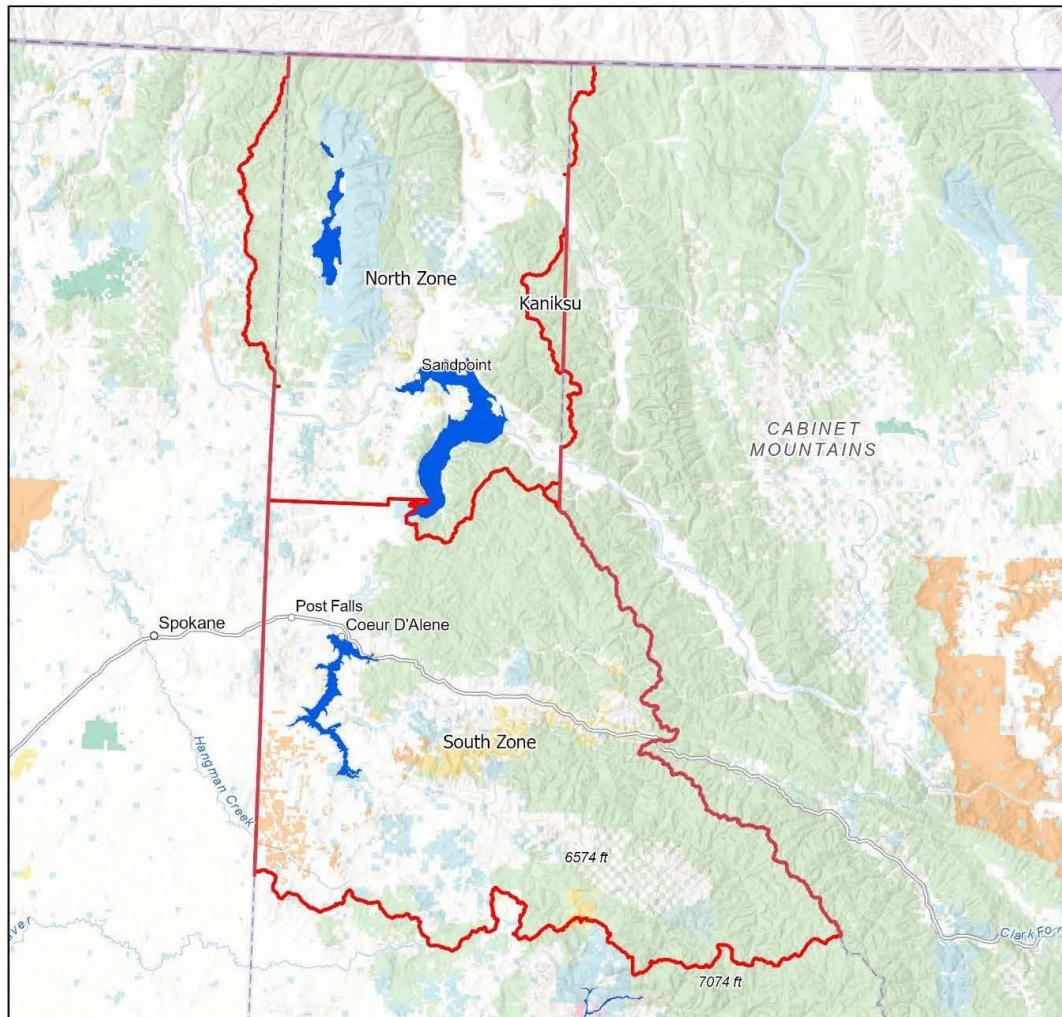
#### Closures

-  Road
-  Trail
-  Area



# Coeur d'Alene

## Fire Restriction Areas



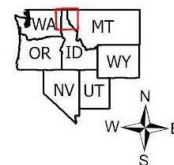
Date Created:  
05/18/2022

The surface management status should be used as a general guide only. Official lands records at the Bureau of Land Management (BLM) and other State and County offices should be checked for up-to-date information regarding any specific tract of lands.

No warranty is made by the Idaho Department of Lands (IDL) as to the accuracy, reliability, or completeness of these datasets for individual use or aggregation with other datasets.

Spatial Reference  
Name: WGS 1984 Web Mercator Auxiliary Sphere

0 5 10 20 30 40 Miles





# FIRE RESTRICTIONS



STAGE II RESTRICTIONS are in effect and **prohibit** the following:



## FIRES OR CHARCOAL

**Prohibited:** Building, maintaining, attending or using a fire, campfire, or stove fire.

**Exceptions:** Persons using a fire or stove fire fueled solely by liquid petroleum or LPG fuels. Such devices, including propane campfires, may be used only in an area **clear of flammable material**.



## SMOKING

**Prohibited:** Smoking outside an enclosed vehicle or building.

**Exceptions:** You can smoke while stopped in an area at least 3 feet in diameter that is barren or **cleared of all flammable materials**.



## Cross Country Travel

**Prohibited:** Operating motorized vehicles off designated roads and trails.



## Chainsaws/Other Equipment

**Prohibited:** The following acts are prohibited from 1:00 p.m. to 1:00 a.m. - Operating a chainsaw or other equipment powered by an internal combustion engine; blasting, welding, or other activities that generate flame or flammable material; or using an explosive.

**Remember – Fireworks are illegal on federal public lands.**



For more information contact your local fire agency